

## DAE AS320U-150RP

### 1-1/2" Hot Water Meter with Pulse Output, Measuring in Gallon + Couplings

#### [Specification]

|                       |   |
|-----------------------|---|
| Model                 | AS320U-150RP  |
| Type                  | 1-1/2" Hot Water Meter with Pulse Output, Measuring in Gallon + Couplings   |
| Couplings             | Included  |
| Pulse Output          | 1 pulse per 10 gallons  |
| Unit                  | Totalizer Measuring in Gallon, GPM  |
| Accuracy              | +/-1.5% within normal flow as per AWWA Standard   |
| Certification         | AWWA C701 and ISO4064.  |
| Max Water Temperature | 194°F (90°C)  |
| Max. Working Pressure | 150 psi, the requirement from AWWA standard   |
| Meter Body            | Bronze  |
| Size                  | Length without couplings: 7.9 inches<br>Length with couplings: 12.7 inches<br>Item dimension: 7.9" length, 4.8" wide, 4.3" height                                 |
| Weight                | 10 lbs.   |
| Flow Rate             | Maximum Flow Rate: 100 GPM (22.7 m <sup>3</sup> /h)<br>Normal Flow Rate: 50 GPM (11.3 m <sup>3</sup> /h)<br>Minimum Flow Rate: 1-1/2 GPM (0.34 m <sup>3</sup> /h) |
| Mount                 | Horizontal Inline mount with dial facing upward   |

#### [Feature]

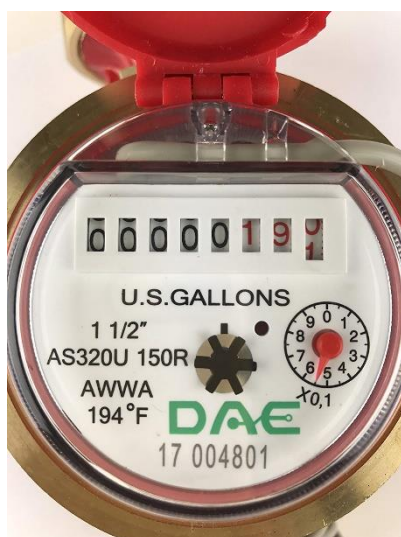
- 8 digits register counter. The last digit is in gallons (\*1 gallon). The dial is one tenth gallons (\*0.1 gallons). The reading in 2nd picture of the listing is 190.55 gallons.
- The register head can be freely rotated for convenient viewing
- The DAE meters have been tested by our QC inspectors in the production line to certify their quality. Therefore, the reading will not be zero.
- DAE AS series is single jet water meter.
- Factory calibration certificates available for government contracts.
- 2 years warranty from the seller.

## [Remote Reading Solutions]

- Refer to 6th picture, available for cloud metering system with CC2030 Gateway. DAE CC2030 Gateway will get the water consumptions from (Auto Meter Reading Module for single water meter) or AMR (Auto Meter Reading Module for 16 water meters) and send them to the cloud (DAE server) through Ethernet. With PC or cell phone or tablet, the building owners or property managers will therefore be able to get access to real time data as well as the monthly water consumption and billing reports to their tenants.
- Only two wire connection between water meter and AMR or AMR130. It is not required for additional power source.
- AMR or AMR130 will collect data from water meters and send them to remote host through Modbus RTU/RS485 with DAE software Energylink400.
- Available to use with CO-10 Electronic Pulse Counter - An inexpensive remote reading solution Please refer to 5th picture.
- Available for wireless remote reading with DAE RF converters. Please refer to 7th picture.



[Picture 1]



[Picture 2]



[Picture 3]



[Picture 4]

## Remote Reading with Pulse Counter An Inexpensive Solution

Note: Only meters with pulse output like AS200U-75P are eligible to be connected to CO-10.

**Electronic  
Pulse Counter  
CO-10**



[info@daecontrols.com](mailto:info@daecontrols.com), (248) 635 3708, [www.daecontrols.com](http://www.daecontrols.com)

[Picture 5]

# Cloud System Architecture

Water Meters

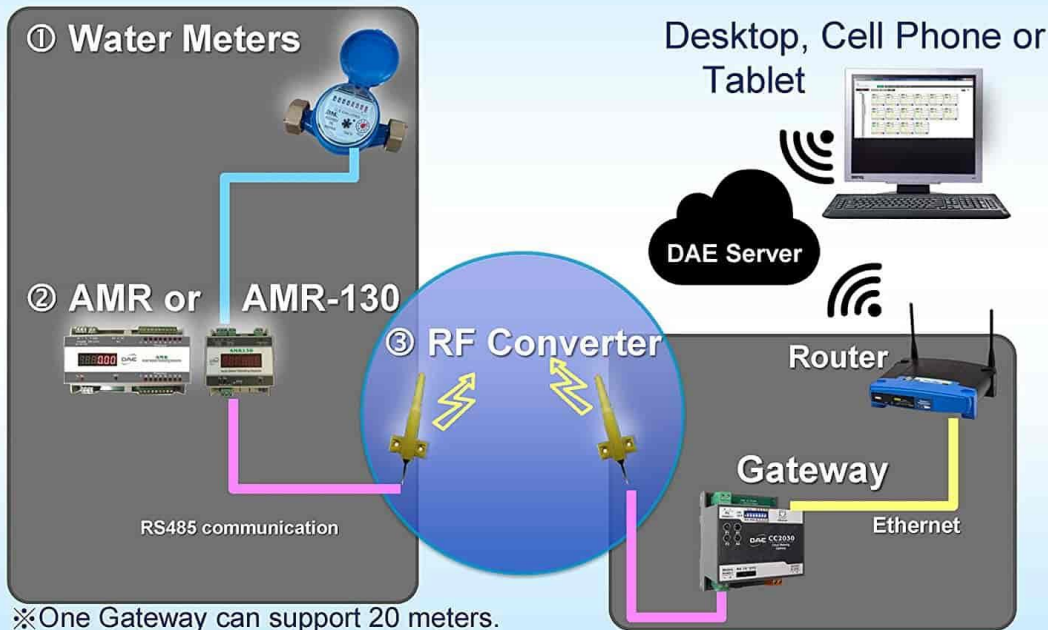


[info@daecontrols.com](mailto:info@daecontrols.com), (248) 635 3708, [www.daecontrols.com](http://www.daecontrols.com)

[Picture 6]

# Wireless Cloud System

Water Meters



[info@daecontrols.com](mailto:info@daecontrols.com), (248) 635 3708, [www.daecontrols.com](http://www.daecontrols.com)

[Picture 7]