

DAE MJ-100m

1" NSF61 Lead Free Potable Water Meter, Cubic Meter, Pulse Output + Couplings

[Specification]

Model	MJ-100m
Type	1" Lead-Free Potable Water Meter with Pulse Output, NSF61 Certified, Measured in cubic meter, with Couplings (NPT Thread), Multi-Jet.
Couplings	NSF61 Certified Lead-Free Couplings Included
Pulse Output	0.001 cu m/pulse, a dry contact (i.e. no voltage) reed switch with 2 wires, 1.5m. The switch may be damaged if input electricity is more than 0.01A, 24V. We shall not be responsible with the result if connecting to third party device which is not certified by DAE.
Unit	Totalizer Measuring in cubic meter
Accuracy	+/- 1.5% within normal flow as per AWWA Standard
Standard	ANSI/NSF 61, ANSI/NSF 372, ISO 4064, AWWA C708, for clean water only
Max Water Temperature	122°F (50°C)
Max. Working Pressure	232 psi, exceeding the requirement from AWWA standard 150 psi.
Meter Body	Lead-Free Bronze
Size	Length without couplings: 10.24 inches Length with couplings: 15.12 inches Item dimension: 10.24" length, 3.86" wide, 4.63" height
Bore Diameter	1.14 inches (19.56 mm)
Weight	5 lbs. 11 once
Flow Rate	Safe Maximum Flow Rate: 11.356 cu m/h (50 GPM) Recommended Maximum Continuous Flow Rate: 5.678 cu m/h (25 GPM) Minimum Test Flow Rate: 0.17 cu m/h (0.75 GPM) Normal Test Flow Limits: 0.681 - 11.356 cu m/h (3-50 GPM)
Pressure Drop	0.145 psi @ 1.136 cu m/h (5 GPM) 1.380 psi @ 3.407 cu m/h (15 GPM) 3.480 psi @ 5.678 cu m/h (25 GPM)
Mount	Horizontal mount with dial facing upwards. For installing vertically, please refer to DAE PD-100, which can be installed in any position, vertically or horizontally, dial facing upwards or downwards or horizontally, water flowing downwards or upwards.

[Feature]

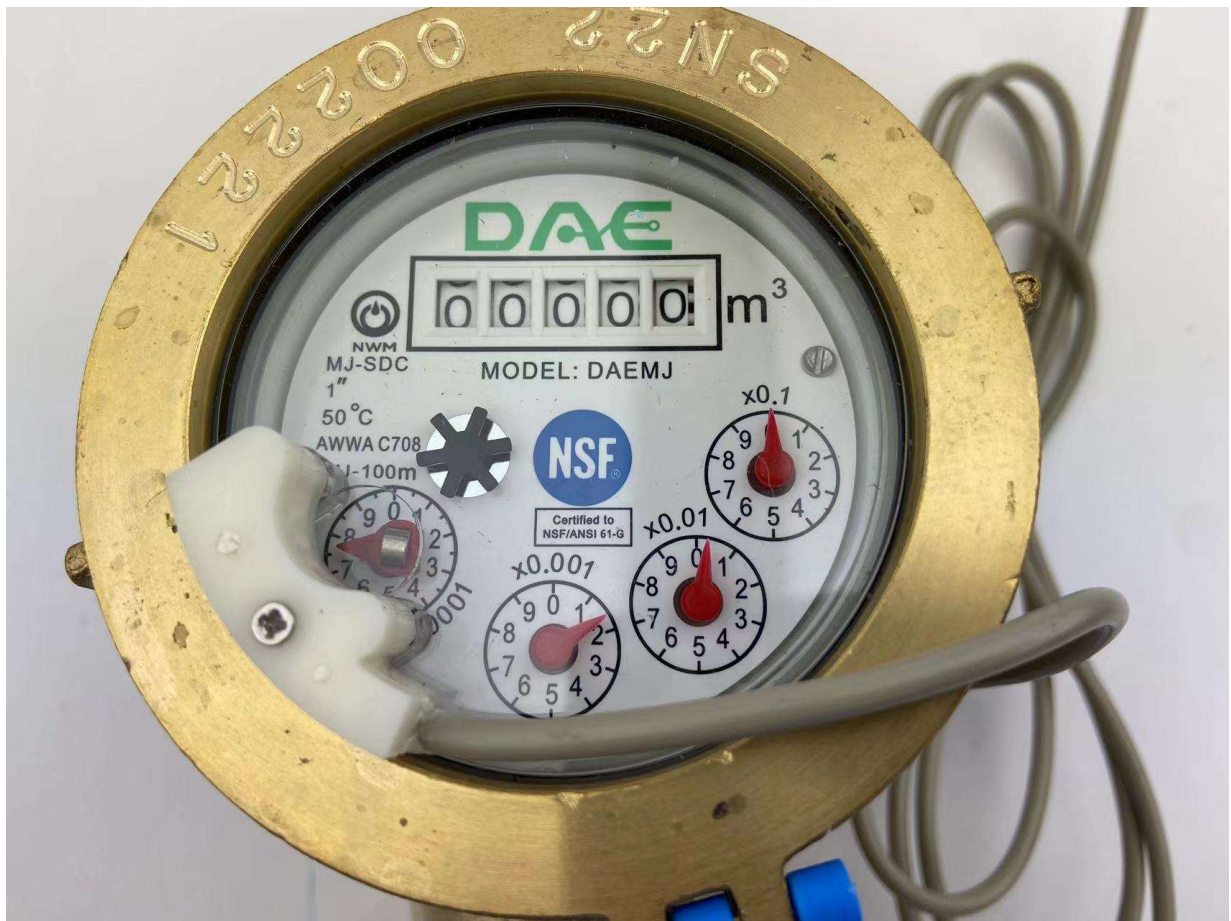
- Max. Reading: 99,999.9999 cu m, Min. Reading: 0.0001 cu m. The 1st digit from the right is in cu m.
- Certified by NSF to meet ANSI/NSF 61 for material safety and ANSI/NSF 372 for lead free plumbing as defined by the US Safe Drinking Water Act.
- The pulse emitter device consists of a plastic housing with Reed Switch and 1.5 m cable with 2 cores in red and black. Dry contact pulse output. Max. Voltage: 24VAC/DC, Max. Current: 0.01A
- 2 years warranty from the seller.

[Remote Reading Solutions]

- Refer to 6th picture, available for cloud metering system with CC2030 Gateway. DAE CC2030 Gateway will get the water consumptions from (Auto Meter Reading Module for single water meter) or AMR (Auto Meter Reading Module for 16 water meters) and send them to the cloud (DAE server) through Ethernet. With PC or cell phone or tablet, the building owners or property managers will therefore be able to get access to real time data as well as the monthly water consumption and billing reports to their tenants. If there is abnormal usage (ex. Broken piping), an alert will be sent to your cell phone automatically.
- Ready for use with CO-10 KIT or CO-10 Electronic Pulse Counter - An inexpensive remote reading solution. Please refer to 5th picture.
- Wireless remote reading available with DAE WSC500 RF converters. Please refer to 7th picture.



[Picture 1]



[Picture 2]



[Picture 3]



[Picture 4]

Remote Reading with Pulse Counter **DAE**

An Inexpensive Solution

Note: Only meters with pulse output like AS200U-75P are eligible to be connected to CO-10.

**Electronic
Pulse Counter
CO-10**



info@daecontrols.com, (248) 635 3708, www.daecontrols.com

[Picture 5]

Cloud System Architecture

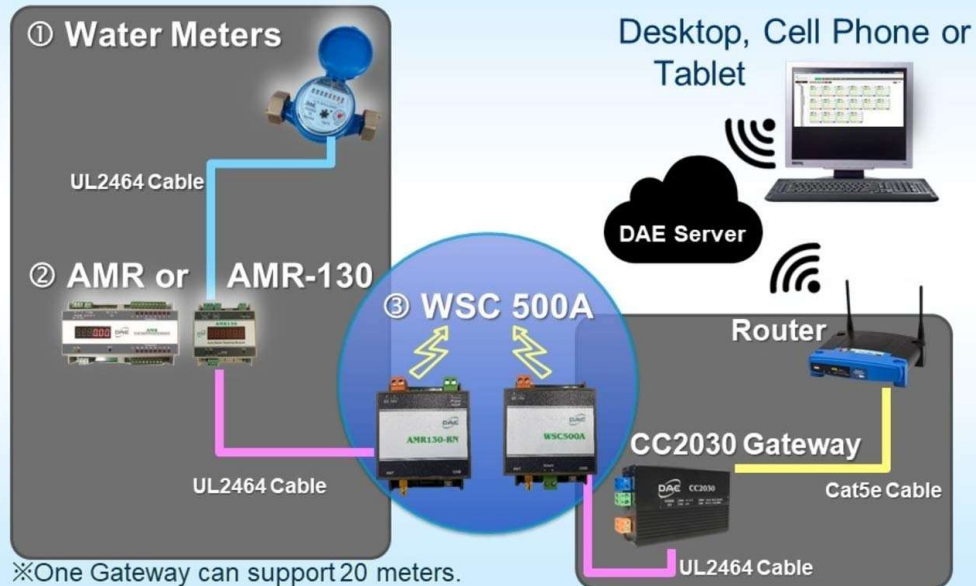
Water Meters



info@daecontrols.com, (248) 635 3708, www.daecontrols.com

[Picture 6]

Wireless Cloud System Architecture - Water



info@daecontrols.com, (248) 635 3708, www.daecontrols.com

[Picture 7]