

## DAE MJ-100f

### 1" NTEP NSF61 Lead Free Potable Water Meter, Cubic Feet, Pulse Output + Couplings

#### [Specification]

Model	MJ-100f
Type	1" National NTEP approval, NSF61 Certified, Lead-Free Potable Water Meter with Pulse Output, Measured in cubic feet, with Couplings (NPT Thread), Multi-Jet.
Couplings	NSF61 Certified Lead Free Couplings Included
Pulse Output	0.1 cu ft/pulse, a dry contact (i.e. no voltage) reed switch with 2 wires, 1.5m. The switch may be damaged if input electricity is more than 0.01A, 24V. We shall not be responsible with the result if connecting to third party device which is not certified by DAE.
Unit	cubic feet
Accuracy	+/- 1.5% within normal flow as per AWWA Standard
Certification	NTEP, ISO 4064, AWWA C708, ANSI/NSF 61, ANSI/NSF 372
Max Water Temperature	122°F (50°C)
Max. Working Pressure	1.6 Mpa (232 psi), exceeding the requirement from AWWA standard 150 psi.
Meter Body	NSF61 Certified Lead-Free Bronze
Size	Length without couplings: 10.24 inches Length with couplings: 15.12 inches Item dimension: 10.24" length, 3.86" wide, 4.63" height
Bore Diameter	1.14 inches (19.56 mm)
Weight	5 lbs. 11 once
Flow Rate	Safe Maximum Flow Rate: 401.04 cu ft/h (50 GPM) Recommended Maximum Continuous Flow Rate: 200.52 cu ft/h (25 GPM) Minimum Test Flow Rate: 6.02 cu ft/h (0.75 GPM) Normal Test Flow Limits: 24.06 – 401.04 cu ft/h (3-50 GPM)
Pressure Drop	0.145 psi @ 40.1 cu ft/h (5 GPM), 1.380 psi @ 120.31 cu ft/h (15 GPM), 3.480 psi @ 200.52 cu ft/h (25 GPM)
Mount	Horizontal Inline mount with dial facing upward. For the water meter to be installed vertically, please refer to PD-100P which can be installed in any position, vertically or horizontally, dial facing upwards or downwards or horizontally, water flowing downwards or upwards.

### [Feature]

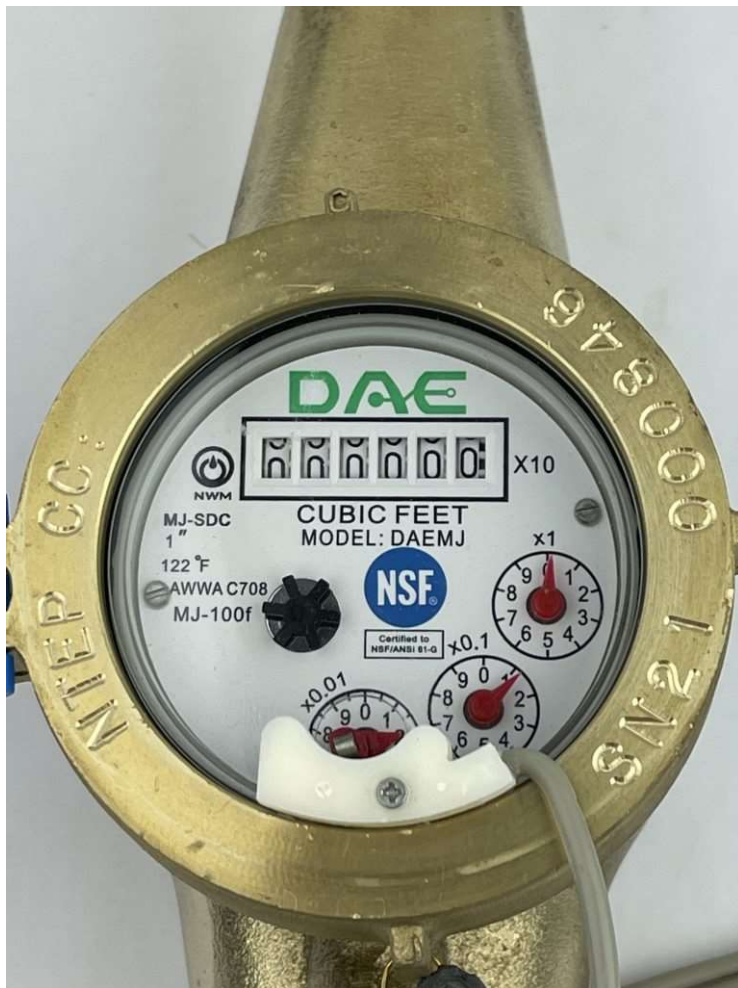
- Max. Reading: 999,999.999 cu ft, Min. Reading: 0.005 cu ft. The 1st digit from the right has a multiplier of 10 cu ft. For example, if you see 01234 on the digits, it is 12340 cu ft. The 1st dial under the digits is in cu ft. The 2nd dial under the digits has a multiplier of 0.1 cu ft.
- National NTEP approval in accuracy, and repeatability as tested by Utah Water Research Lab. It applies to all the states including California who accepts both NTEP or CTEP.
- Certified by NSF to meet ANSI/NSF 61 for material safety and ANSI/NSF 372 for lead free plumbing as defined by the US Safe Drinking Water Act.
- Factory calibration certificates available for government contracts.

### [Remote Reading Solutions]

- Refer to 6th picture, Cloud Metering available with DAE CC2030 Gateway. CC2030 will collect water usage from DAE AMR (for 16 meters) or AMR130AN (for 1 meter) and send them to cloud server through Ethernet. With PC, cell phone, the landlords can see real time data, monthly water usage & billing reports to their tenants. If there is abnormal usage (ex. Broken piping), an email alert will be sent to your cell phone. No IT guy required. Just connect wires as per a simple picture (see video) & ready to go.
- Ready for use with CO-10 KIT or CO-10 Electronic Pulse Counter - An inexpensive remote reading solution Please refer to 5th picture.
- Only two wire connection between water meter and AMR or AMR130 or CO-10. It is not required for additional power source.
- Wireless remote reading available with DAE RF converters. Please refer to 7th picture.



[Picture 1]



[Picture 2]



[Picture 3]



[Picture 4]

## Remote Reading with Pulse Counter

An Inexpensive Solution

Note: Only meters with pulse output like AS200U-75P are eligible to be connected to CO-10.

**Electronic  
Pulse Counter  
CO-10**



[info@daecontrols.com](mailto:info@daecontrols.com), (248) 635 3708, [www.daecontrols.com](http://www.daecontrols.com)

[Picture 5]



# Cloud System Architecture

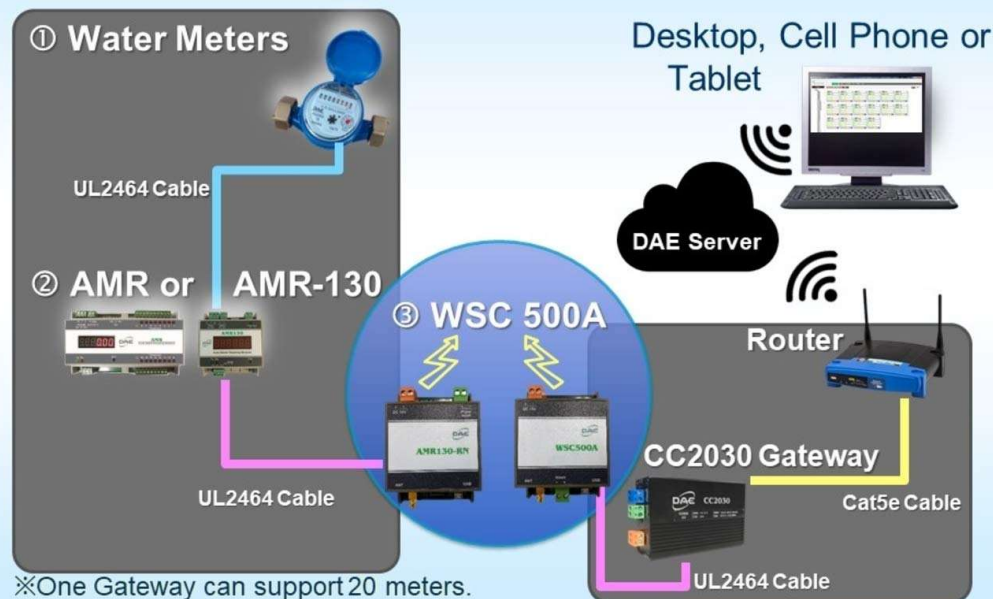
Water Meters



[info@daecontrols.com](mailto:info@daecontrols.com), (248) 635 3708, [www.daecontrols.com](http://www.daecontrols.com)

[Picture 6]

## Wireless Cloud System Architecture - Water



[info@daecontrols.com](mailto:info@daecontrols.com), (248) 635 3708, [www.daecontrols.com](http://www.daecontrols.com)

[Picture 7]